



6 Days

Spain

Northern Spain Adventurer

Journey through Northern Spain's autonomous communities on this short but action-packed adventure. Gain an insight into life in the Basque region and for the foodies, sample the delights of the local pintxos. This trip is not short of adventurous activities with zip-lining, climbing and canoeing. As we enter the region of Castilla y Leon we are greeted by stunning landscapes and explore the jewel in the crown, the Los Picos mountain range. We climb aboard a cable car which takes us to 2,000m and places us in the centre of this breathtaking scenery. We will also learn about Spain's rich history and how this has been shaped from Roman to medieval times. We finish our journey on the coast where we will marvel at the majestic cliffs at Playa de las Catedrales. Come and join us on this fantastic adventure!



Recommended tour itinerary

Day 1

Fly from UK to Bilbao:

Welcome to the Basque region of Spain! On arrival we will be met by our guide and take a tour of the city. During our tour we will visit some of the main sights in Bilbao including the Plaza Nueva, Ribera Market, Basilica of Begoña and Etxebarria Park. Finally we visit the impressive Guggenheim Museum which sits on the banks of the estuary of Bilbao. The most striking feature of this building are the curvilinear and twisted shapes, covered with limestone, glass curtains and titanium plates.

After a busy first day in Spain we are dropped off at our hotel in the outskirts of Bilbao, where we have dinner and some time to relax.

Day 2

Tree Adventure Park and Santillana del Mar

We have an action packed morning as we head to the Tree Adventure Park. Here we can zip-line, test out our climbing skills on the climbing walls and traverse tree top bridges. Following a busy morning we stop for lunch before departing for the town of Santillana del Mar. Known as one of the most charming towns in the north of Spain, we will walk through its cobblestone streets, visit its palaces and experience the medieval atmosphere of the town.

Our final activity of the day will be at Neocueva de Altamira where we can visit the Interactive Cave Museum. Following this we transfer to Santander where we will have dinner and spend the night.

Day 3

Fuente de Cable Car

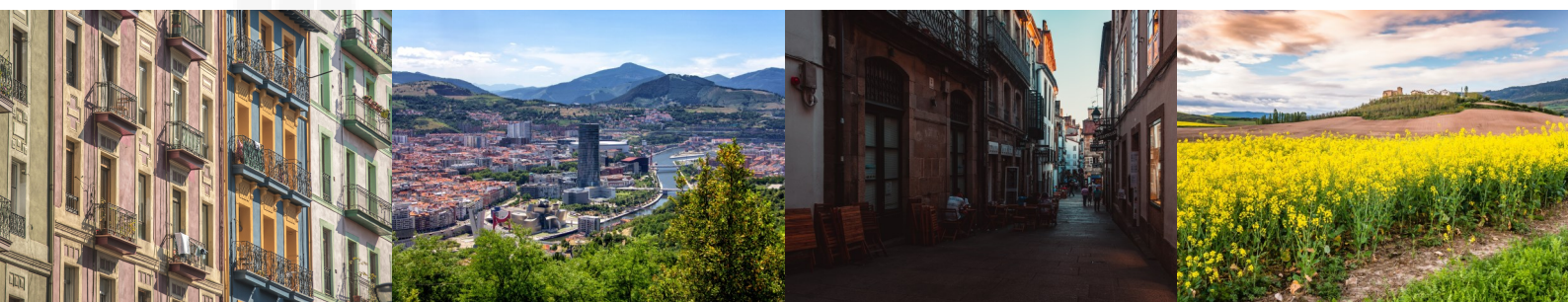
Today we climb from 800m to 2000m aboard the Fuente de Cable Car which places us in the centre of the Picos de Europa. From the viewing point at the top we will have fantastic panoramic views of the landscapes. After enjoying the stunning scenery we begin to descend on foot and if we're lucky we will be able to see the flight of the vultures. At the end of our scenic descent we arrive at the town of Espinama. In the afternoon we visit a typical Cantabrian cheese manufacturer where we will see how this cheese is produced and of course get to sample some of the local delights.

After a busy day amongst amazing scenery, we will travel to the outskirts of Oviedo where we have dinner at our hotel and get an early night before another day of exciting activities.

Day 4

Canoeing and Asturias

This morning we say goodbye to Oviedo and transfer to the town of Arriondas. Here we will have a briefing from our instructor and then board our canoes as we journey down the Sella River to





the small town of Llovió. This is a famous canoeing route which is suitable for all abilities. After a relaxing morning meandering down the river, we cross over in to the region of Asturias and the town of Colunga. Here we will visit the Jurassic Museum which is home to one of the largest reptile exhibits in the world.

We take a scenic route to our hotel along the coast. On the way we will pass through various local fishing villages and be able to see people going about their daily lives in these tranquil towns, whilst enjoying the coastal scenery.

Day 5

Playa de las Catedrales, La Coruña and Santiago de Compostela

On our last full day in Spain we leave Asturias and head to the Autonomous region of Galicia. First of all we visit the famous beach of Playa de las Catedrales. Some of these are more than 32 metres and have been sculpted by the wind and sea to form spectacular arches and vaults. Playa de las Catedrales is considered to be one of the most beautiful beaches in the country which is owed to the exceptional cliffs that stand there.

Following our visit to Playa de las Catedrales, we journey deeper into the region of Galicia and further enjoy the picturesque coastline of this region. Our next stop is La Coruña where we will take a walk and see the local sites, such as the impressive aquarium which sits next to the sea. La Coruña is also home to the impressive Tower of Hercules which was built as a lighthouse during Roman times. We will also visit the famous cathedral, Obradoiro Square and the iconic hospital of the catholic monarchs. After a couple of days enjoying the coastal areas of Spain we head further inland and visit the old town of Santiago de Compostela. This town is famously known as the final destination for those that walk the Camino de Santiago.

Day 6

Santiago to Bilbao and return to UK

This morning after breakfast we say goodbye to the region of Galicia and Santiago de Compostela. Accompanied by our guide we will transfer to Santiago Rosalia de Castro Airport for our flight to Bilbao where we will catch our flight back to the UK.

Further information

Look what's included!

- International flights
- All accommodation
- All food
- All transportation and activities
- Bi-lingual, first-aid qualified local tour leader
- Parent and student trip launch evening
- Pre-departure preparation evening
- 1-day offsite safety INSET day for staff
- ATOL financial protection
- Medical Emergency / Repatriation Travel Insurance
- Group first aid kit and prescription meds pack
- BS8848 safety management and risk assessments
- Detailed pre-departure information and kit lists
- Comprehensive teacher travel packs
- Permanent operations team in your destination
- 24-hour UK operational support whilst overseas
- Carbon offsetting of all flights
- Free t-shirt for every participant and teacher

What's excluded?

- Transport to airport in UK
- Drinks (advice will be given on purification of water)
- Visas or tourist cards if required
- Any required inoculations
- Personal spending money
- Tips for guides, drivers and porters
- Airport departure taxes paid locally
- Cancellation and personal effects insurance

Your educational journey timeline



Physical journey rating:



Anyone fit and healthy should be able to actively participate in this trip. There is very little physical activity although you will be expected to carry your own luggage at times. Walking around markets, city tours and such like is common and so you could be spending a few hours on your feet.

Culture shock rating:



Expect to find local life broadly familiar to that in the UK, however aspects of the trip are likely to be in remoter areas where differences are more profound. Whilst English may not be the native language, you can expect it to be widely spoken. There may be some cultural differences and although western pallets should be well catered for there will be the opportunity to try new dishes.

A journey of 1,000 miles...

Starts with a single step... **Contact us now** to start your educational journey.



1 Get your tailor-made proposal and further information

If this itinerary doesn't quite scratch your educational travel itch then let us tailor-make one for you. Our wealth of experience and expert in-country contacts means we can design an itinerary just for you. Contact us for more information and a detailed quote.

2 Ask for risk assessments and marketing materials

We can provide initial risk assessments and destination threat assessments to help you with your expedition approval process. Ask for posters and your pre-booking information pack too.

3 Arrange a trip launch evening at your school

This is a chance for students and parents to hear more about the planned adventure with a comprehensive information evening and an opportunity for questions.



t: 01392 660056 | e: schools@thestc.co.uk | w: www.thestc.co.uk